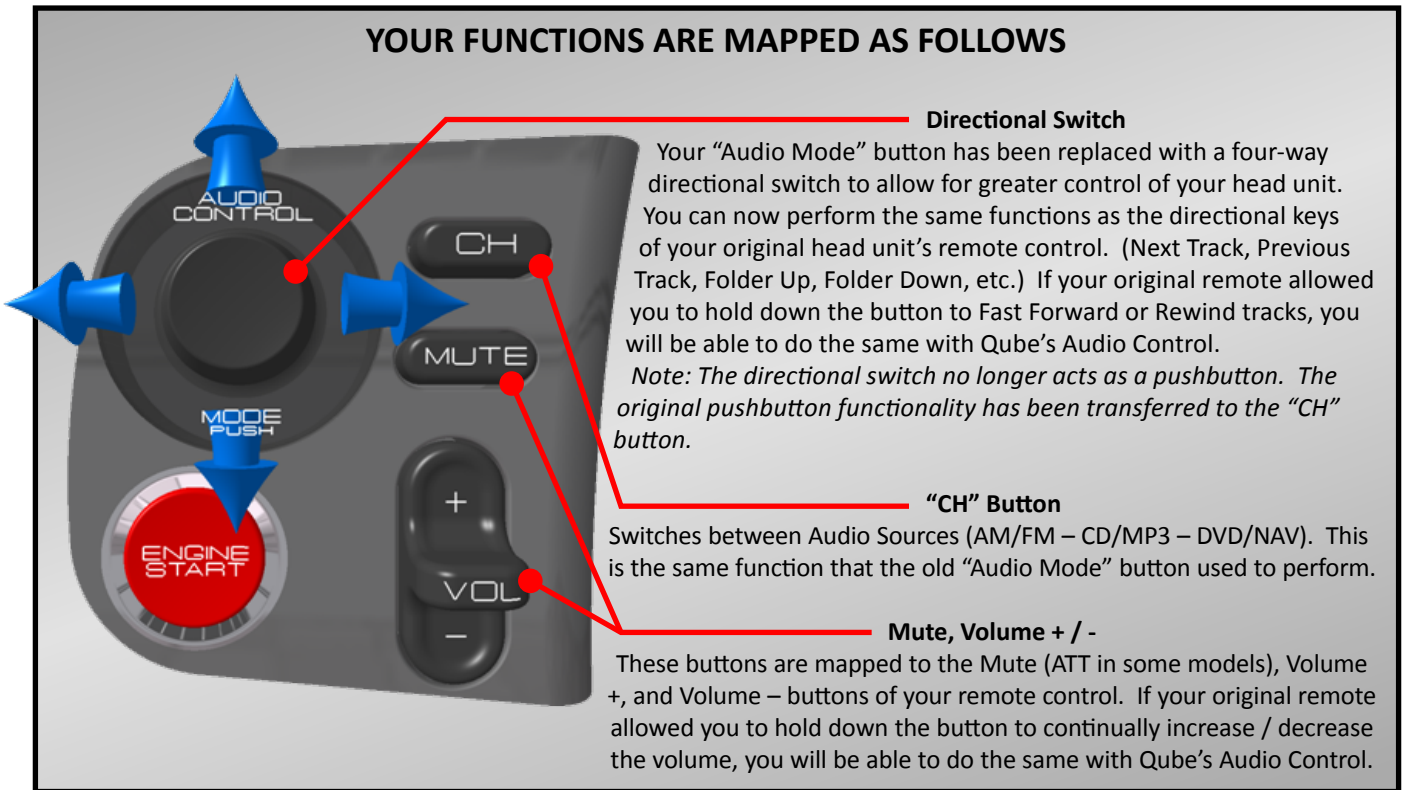


# Qube's Audio Control

## Owner's Manual

Thank you for your purchase of Qube's Audio Control! With this device, you will regain the original functionality of the stock audio control as well as add enhanced functionality by replacing the large "Audio Mode" button with a 4-way directional switch, all while looking COMPLETELY STOCK.



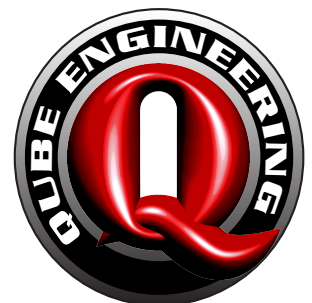
**INSTALLATION** – Download and print "Qube's Audio Control Installation Instructions" from [www.qube-engineering.com](http://www.qube-engineering.com).

**MAINTENANCE** – If your Audio Control does not function as expected or stops functioning entirely, it may be time to replace the batteries in the device. Although the batteries should only require changing every few years, great care was taken to make sure that changing the batteries would be a simple procedure. Simply reach underneath the dashboard, unplug the 8-pin connector, and detach the remote control part of the Audio Control from the Velcro strip. Change the batteries according to the instructions that came with your original remote control, reattach the 8-pin connector, and press the device back onto the Velcro strip. That's it!

**MALFUNCTIONS** – If for some reason your Audio Control malfunctions, simply reach under the dashboard and unplug the 8-pin connector, or remove the batteries from the remote control part of the Audio Control. If the malfunction is not due to unnatural abuse, please contact me within 6 months of your purchase date to make arrangements to get you up and running again ASAP. I will take care of any reasonable expenses you incur and go to great lengths to ensure you are a satisfied customer. Even if more than 6 months have passed since the time of purchase, I will be very happy to work something out with you.

Sincerely,

Art Timbol  
Qube Engineering  
"DJ Qube" on s2ki.com  
818-271-QUBE (7823)  
art@qube-engineering.com



©Qube Engineering 2007